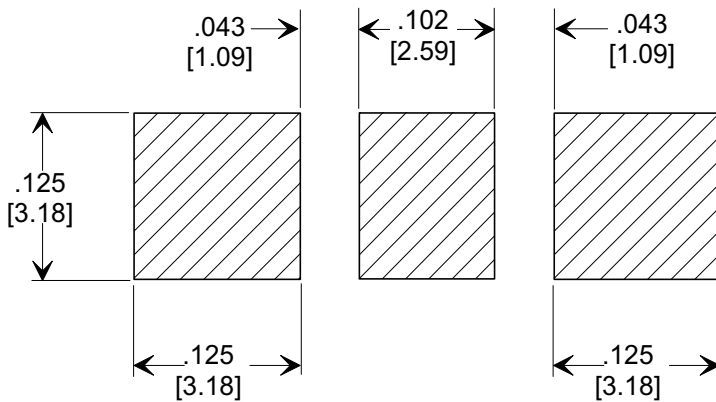
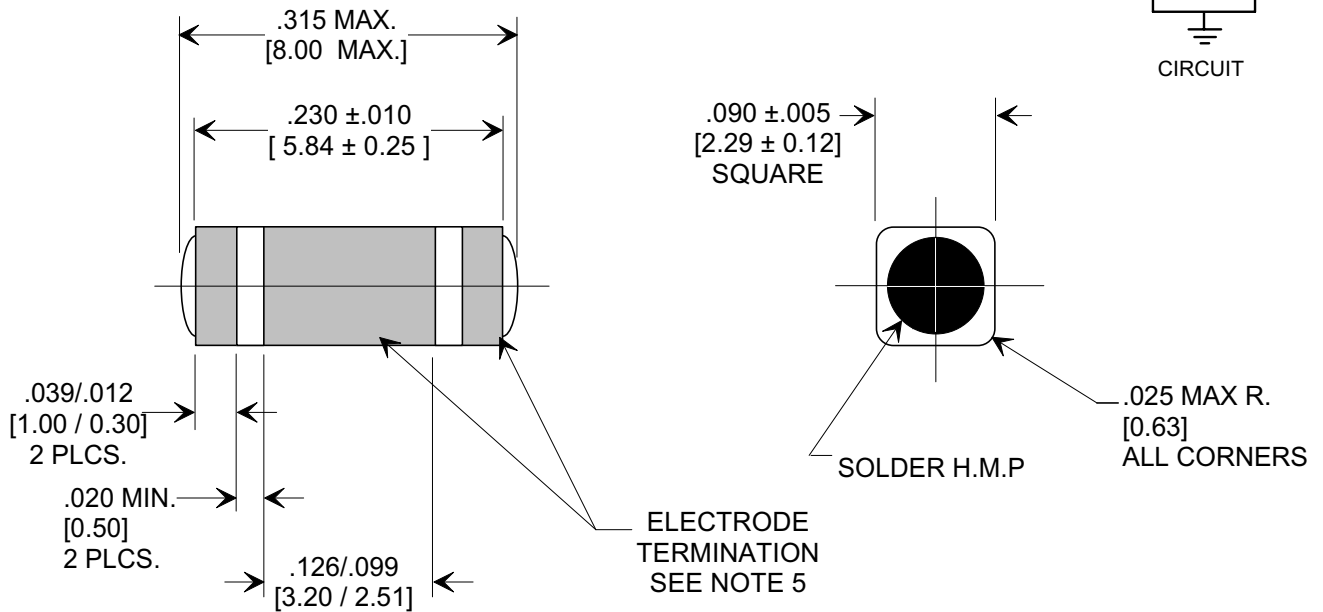
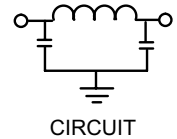
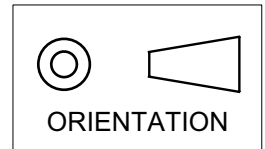


Electrical Testing
per Tusonix standard
test plans and Mil-Std-202
Test Methods.

MARKETING SALES DRAWING
DIMENSIONS IN INCHES - DO NOT SCALE THIS DRAWING
DIMENSIONS IN METRIC []



SUGGESTED
MOUNTING PATTERN

1. INDUCTANCE TO BE 0.1 H MINIMUM.
2. PACKAGE: BULK OR BLISTER TAPE TO IEC-60286-3 TYPE II AND EIA-481-A.
3. TUSONIX STANDARD PART NUMBER: 4700-006.
TUSONIX RoHS COMPLIANT PART NUMBER: 4700-006 LF.
CUSTOMER MUST SPECIFY STANDARD OR RoHS PART NUMBER WHEN ORDERING.
4. PART MARKING: STANDARD PART: NO MARKING.
RoHS PART: LABELED ON PACKAGING ONLY.
5. ELECTRODE TERMINATION: STANDARD 60/40 SOLDER; RoHS COMPLIANT - MATTE TIN.

CAP.	TOLERANCE	WVDC		TEST VOLTAGE	I.R.MIN. @ 100 (VDC.)	IDC	ELECTRODE TERMINATION	TYPICAL NO LOAD INSERTION LOSS dB AT 25°C PER MIL-STD-220		
		85°C	+125°C					10 MHZ	100 MHZ	1 GHZ
100 pF	+80% / -20%	100	100	300 VDC	10 G	10 A	SOLDER	----	3	16

REVISION RECORD	0	Original Release
	8	DELETED ITEMS 000, 001, 002 & 007. S.M. 01-16-97
	9	970109-3
	10	DIM. .085 ±.005 WAS .083 ±.004. S.M. 07-1598
	11	19980715-8-03
ITEM 009 & ORIENTATION SYMBOL ADDED L.E. 06-18-01		
REVISED DWG. DRAWING MADE FOR EACH VAR.	10	20010618-5-01
	11	DIM .090 WAS .085. REVISED MOUNTING PAT. ADDED ITEMS FROM 4700-050. S.M. 09-19-01
	12	20010918-3-01
	13	20030213-1-03
	14	20030619-2-03
NOTES ADDED L.E. 08-09-05		
20050809-1-02		

--TOLERANCES-- Unless Otherwise Specified		Title	
DECIMAL ± .005 [0.13]		SURFACE MOUNT SQUARE STYLE PI FILTER	
ANGLES ±		Drawn FG 9-9-94	Scale 7 X
TUSONIX TUCSON, ARIZONA		Approved NV 9-9-94	
A		4700-006	

X-ON Electronics

Largest Supplier of Electrical and Electronic Components

Click to view similar products for [cts](#) manufacturer:

Other Similar products are found below :

[744C083333JP](#) [296UD504B1N](#) [407F11C012M0000](#) [262XR102B](#) [0538-011-F-15.0-60](#) [Z3A-22IB-3-BNL](#) [4306-033](#) [744C083102JP](#)
[206S0108](#) [CB3LV-3C-32M7680](#) [206-8LPS](#) [206S0097](#) [744C083222JP](#) [743C083103JP](#) [770101223](#) [026TB32R253B1A1](#) [CB3-3C-50M0000](#)
[ATS040SM-1](#) [APF30-30-13CB/A01](#) [MXO45HST-3C-16M0000](#) [ATS061C](#) [743C083104JP](#) [744C083472JP](#) [77083103P](#) [218-10LPSTRF](#)
[O7050147456MFDA4SC](#) [402WF20012IMR](#) [KFF6516A](#) [194-8MST](#) [742C083330JPTR](#) [750-101-R120](#) [766143221GP](#) [77061333P](#)
[403C35D12M00000](#) [CTS-1621](#) [284TBCF502A26A1](#) [766163560GP](#) [CB3-3I-20M0000](#) [4400-032](#) [ATS12ASM-1](#) [201XR104B](#) [770103101P](#)
[CA25C5003HLT](#) [209-2MSF](#) [6740-2015](#) [CB3-3C-1M5440](#) [T8031-5V](#) [767163104D](#) [PB1-36ND](#) [ATS049BSM-1E](#)