

Color-Keyed®



T&B Catalog Number:

54162NT

UPC Number:

78620986789

Description:

Copper One-Hole Lug - Standard Barrel Narrow Tongue Lug - max 35KV, 3/0 AWG Wire, 1/4" Bolt Size, Tin Plated with Inspection Hole, Orange 50

Status:

Active

WEB_USE

-T&B Product Line 007

General

-Material Copper
-Finish Tin Plated
-Wire Size 3/0 AWG
-Number of Studs 1
-Stud Size 1/4
-Tongue Angle Straight
-Barrel Length Standard
-Barrel Shape Standard
-Tongue Width Narrow
-Peep Hole Y
-Marking Standard
-Hole Shape Round
-Die Color Orange
-Die Code 50

Dimension Information

-A (inches) 1.680
-B (inches) 0.650
-C (inches) 0.632
-D (inches) 0.125
-E (inches) 0.632
-F (inches) 0.250

Tooling

-Connector & Tooling Chart Available on Website

Packaging

-T&B Order Multiple 10
-T&B Inner Pack 10
-Package in Units 100
-T&B Sold in UOM Each
-T&B Weight Per UOM 7.7 lbs. per 100

Application Support

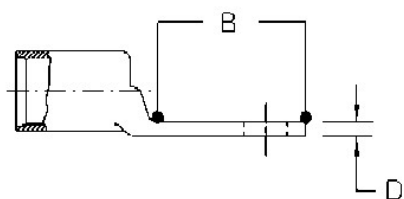
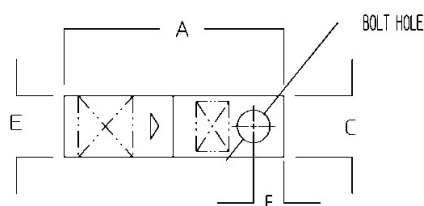
-T&B Sales Drawings wsd-000288
-T&B Instruction Sheets ta00675-tb2
-Connector & Tooling Chart Available on Website

Notes

- Dimensions given for reference only. Dimensions may vary up to +/- .030.

Certifications

-RoHS Compliance Yes



Certifications



File Nbr:
E9809

For further technical assistance, please contact us...

Thomas & Betts - USA
8155 T&B Blvd.
Memphis, TN 38125
www.tnb.com

T&B Technical Support
MS 3B-50
8155 T&B Blvd.
Memphis, TN 38125

Hours: 7AM - 6PM CDT
Monday-Friday
Phone: (888) 862-3289
Fax: (901) 252-1321
Email: techsupport@tnb.com

X-ON Electronics

Largest Supplier of Electrical and Electronic Components

Click to view similar products for [abb](#) manufacturer:

Other Similar products are found below :

[TV10-516R](#) [017667013](#) [RF727](#) [2CMA100178R1000](#) [5SDD 92Z0401](#) [ESV14-BS](#) [EZS-21-250](#) [F204AC-40/0.03](#) [F204AC-40/0.1](#) [F362-](#)
[25/0.03](#) [GJL1211001R0011](#) [GJL1211201R8000](#) [GJL1211501R8000](#) [GJL1213001R0017](#) [GJL1213001R0101](#) [GJL1311001R0101](#)
[GJL1311001R8010](#) [GJL1311201R0001](#) [GJL1313001R0011](#) [GJL1313001R0101](#) [GJL1317201R0001](#) [AF09-30-01-11](#) [AF460-30-11-68](#) [1455](#)
[EF45-30](#) [ERG297](#) [HSC2-20](#) [1SAM201904R1001](#) [1SAM350000R1003](#) [1SAZ721201R1009](#) [1SAZ721201R1014](#) [1SAZ721201R1025](#)
[1SFA611101R1002](#) [1SFA611130R1103](#) [1SFA611131R1101](#) [1SFA611143R1101](#) [1SFA611202R1108](#) [1SFA611203R1108](#)
[1SFA611215R1001](#) [1SFA611216R1108](#) [1SFA611285R1002](#) [1SFA611702R6006](#) [1SFA616162R1025](#) [1SFA619100R3015](#)
[1SVR730020R0200](#) [IPC4111](#) [OS30FACC12](#) [OS60GJ03](#) [OVR1N160277PS](#) [OXC1L48](#)